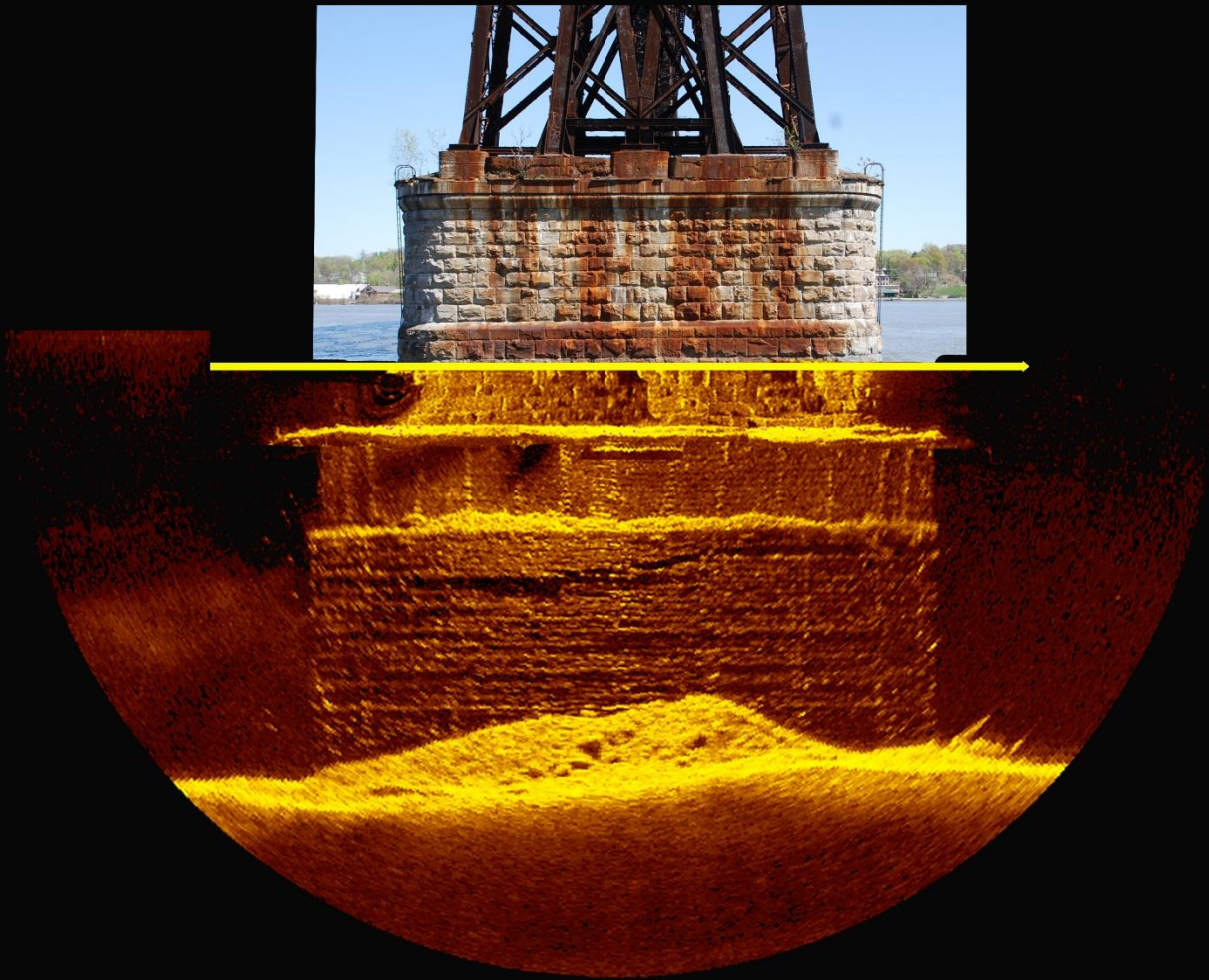


Poughkeepsie Rail Bridge, Poughkeepsie, New York



In the fall of 2010 AWUA conducted an underwater sonar inspection of the Poughkeepsie Rail Bridge. The Poughkeepsie Rail Bridge has 4 piers supporting the bridge superstructure in the river. The Poughkeepsie Rail Bridge was built in the 1860's through the early 1870's. Due to the high sediment load in the Hudson River, diving operations were unable to get a good assessment of the 4 bridge piers. The image displays that the cribbing structure has had lateral displacement. This displacement has allowed stone ballast to fall out of the crib structure and pile on the river bed. From data of the sonar record, it was determined that the lateral displacement was 8 inches outward. From this information, the engineering company was able to develop a solution to repair the crib structure.

